



BENDEKA[®]

(bendamustine HCl)
injection

Understanding my treatment with BENDEKA[®]

BENDEKA is indicated for the treatment of patients with

- Chronic lymphocytic leukemia (CLL). Efficacy relative to first-line therapies other than chlorambucil has not been established.
- Indolent B-cell non-Hodgkin lymphoma (NHL) that has progressed during or within 6 months of treatment with rituximab or a rituximab-containing regimen.

Important Safety Information

BENDEKA is not right for everyone: including patients with a known allergic response to bendamustine, polyethylene glycol 400, propylene glycol, or monothioglycerol.

Please read additional Important Safety Information throughout and on page 7 and Full Prescribing Information starting on page 17.



Getting started

Why did my oncologist prescribe BENDEKA® (bendamustine HCl) for me?

Treating blood cancer is a journey. Depending on where you are in your journey, your oncologist may prescribe BENDEKA—a type of chemotherapy. Chemotherapy is a type of treatment that is designed to kill cancer cells.

BENDEKA is prescribed to treat 2 types of cancer:

- **Chronic lymphocytic leukemia (CLL)**, which starts with certain white blood cells in the bone marrow and then goes into the blood
 - If you have been diagnosed with CLL, you may receive BENDEKA
- **Slow-growing non-Hodgkin lymphoma (NHL)**, which starts with certain white blood cells in the lymph system
 - If you have been previously treated for NHL that has continued to worsen during or after treatment with another medication, your doctor may switch you to BENDEKA

BENDEKA is indicated for the treatment of patients with

- Chronic lymphocytic leukemia (CLL). Efficacy relative to first-line therapies other than chlorambucil has not been established.
- Indolent B-cell non-Hodgkin lymphoma (NHL) that has progressed during or within 6 months of treatment with rituximab or a rituximab-containing regimen.

Important Safety Information

BENDEKA may cause serious side effects including: low blood cell counts, infections or recurrence of infections, unexpected responses to BENDEKA when placed in your blood, sudden and severe allergic responses, kidney failure due to fast breakdown of cancer cells, other cancers, and leaking of BENDEKA out of your vein and into your surrounding skin. Some of these side effects, such as low blood counts, infections, liver injury, and severe allergic skin responses (when bendamustine HCl was given alone and in combination with other anticancer medications or allopurinol), have caused death.

Please read additional Important Safety Information throughout and on page 7 and Full Prescribing Information starting on page 17.

How can this brochure help me?

This brochure was written to help you better understand what you might expect during treatment with BENDEKA. Please contact your health care team with any questions you may have throughout your treatment.

YOU WILL LEARN

How BENDEKA is given

Serious and common side effects that may occur with BENDEKA treatment

How to tell if your treatment is working

Answers to some common questions about BENDEKA

Remember, not every person responds to treatment the same way. This is also true for side effects. People's emotions may vary too. It may not be easy, but try to stay motivated. Also know that you are not alone on your treatment journey.

Before you start treatment, ask your doctor or nurse any questions you may have. Write down a list of questions before each appointment. Take a family member or friend to your appointment to help you keep track of answers and give support.

This information is not meant to take the place of talking with your health care team about your condition or treatment. If you have questions after reading this brochure, please talk with your health care team.

Please read additional Important Safety Information throughout and on page 7 and Full Prescribing Information starting on page 17.

Understanding my treatment

How will I get BENDEKA® (bendamustine HCl)?

BENDEKA may be given at your doctor's office, the hospital, or an infusion center. It is given as an intravenous (IV) infusion that goes directly into your vein through a small needle in your arm.



As part of your treatment process,
it takes about **10 minutes**
for a **BENDEKA** infusion.

Important Safety Information

Tell your doctor if you have any side effects including: rash, facial swelling, or difficulty breathing during or soon after your infusion with BENDEKA injection. These are signs of an allergic reaction. You also should tell your doctor if you have shortness of breath, significant fatigue, bleeding, bruising, fever, or other signs of infection. Also, tell your doctor if you experience nausea, vomiting, diarrhea, loss of appetite, or a yellow skin tone. In addition, your doctor will perform blood tests to see if you have low blood counts. These are lower-than-normal numbers of red blood cells, white blood cells, or platelets.

Some serious side effects may require changes in therapy, such as lowering the amount of BENDEKA given, stopping the use of BENDEKA, or waiting longer than expected between doses of BENDEKA.

Please read additional Important Safety Information throughout and on page 7 and Full Prescribing Information starting on page 17.

CLL cycle of treatment

This calendar shows 1 cycle of treatment for CLL with BENDEKA. Each cycle lasts 28 days. The calendar shows which days you will get your infusion and for how long. This treatment cycle may be repeated up to 6 times.

28-day cycle							
Week 1	1 10-min IV infusion	2 10-min IV infusion	3	4	5	6	7
Week 2	8	9	10	11	12	13	14
Week 3	15	16	17	18	19	20	21
Week 4	22	23	24	25	26	27	28

NHL cycle of treatment

This calendar shows 1 cycle of treatment for NHL with BENDEKA. Each cycle lasts 21 days. The calendar shows which days you will get your infusion and for how long. This treatment cycle may be repeated up to 8 times.

21-day cycle							
Week 1	1 10-min IV infusion	2 10-min IV infusion	3	4	5	6	7
Week 2	8	9	10	11	12	13	14
Week 3	15	16	17	18	19	20	21

Will my dose ever change?

As explained earlier, not all patients react to medications the same way, so it may be necessary for your doctor to make changes to the dose of BENDEKA to find out what is right for you or even to stop treatment. Changing the dose or delaying treatment may be necessary if you are experiencing side effects. The most important goal is to find the treatment approach that will help you achieve the best results possible. Your doctor may change, delay, or even stop your treatment.



**Talk with your health care team about how often you will get treatment.
That way, you can plan for your appointments.**

Please read additional Important Safety Information throughout and on page 7 and Full Prescribing Information starting on page 17.

How will I know if my treatment is working?

TESTS THAT MAY BE DONE



Your health care team will give you a physical exam and ask about your symptoms. Blood samples may be taken or other tests may be done. These tests show how you are responding to treatment with BENDEKA® (bendamustine HCl).

TYPES OF RESPONSES



If the tests do not show any cancer cells, your response is called a **complete response**. If the number of cancer cells is reduced, your response is called a **partial response**. Sometimes, a person may not show a response to treatment. If you want to know more about your response to treatment, your doctor can provide more detail.

TALK WITH YOUR DOCTOR



Don't worry if you don't see a response right away. It may take some time before you start seeing positive results. Talk about your progress with your doctor. Together, you can decide on a treatment plan that is right for you.

BENDEKA is indicated for the treatment of patients with

- Chronic lymphocytic leukemia (CLL). Efficacy relative to first-line therapies other than chlorambucil has not been established.
- Indolent B-cell non-Hodgkin lymphoma (NHL) that has progressed during or within 6 months of treatment with rituximab or a rituximab-containing regimen.

Please read additional Important Safety Information throughout and on page 7 and Full Prescribing Information starting on page 17.

Important Safety Information

BENDEKA is not right for everyone: including patients with a known allergic response to bendamustine, polyethylene glycol 400, propylene glycol, or monothioglycerol.

BENDEKA may cause serious side effects including: low blood cell counts, infections or recurrence of infections, unexpected responses to BENDEKA when placed in your blood, sudden and severe allergic responses, kidney failure due to fast breakdown of cancer cells, other cancers, and leaking of BENDEKA out of your vein and into your surrounding skin. Some of these side effects, such as low blood counts, infections, liver injury, and severe allergic skin responses (when bendamustine HCl was given alone and in combination with other anticancer medications or allopurinol), have caused death.

Tell your doctor if you have any side effects including: rash, facial swelling, or difficulty breathing during or soon after your infusion with BENDEKA injection. These are signs of an allergic reaction. You also should tell your doctor if you have shortness of breath, significant fatigue, bleeding, bruising, fever, or other signs of infection. Also, tell your doctor if you experience nausea, vomiting, diarrhea, loss of appetite, or a yellow skin tone. In addition, your doctor will perform blood tests to see if you have low blood counts. These are lower-than-normal numbers of red blood cells, white blood cells, or platelets.

Some serious side effects may require changes in therapy, such as lowering the amount of BENDEKA given, stopping the use of BENDEKA, or waiting longer than expected between doses of BENDEKA.

BENDEKA can cause fetal harm if taken while pregnant. If you are able to become pregnant, your healthcare provider will do a pregnancy test before starting treatment with BENDEKA. Females of reproductive potential should use effective contraception during treatment with BENDEKA and for 6 months after the final dose and for males with female partners for 3 months after the last dose. BENDEKA may also impair male fertility. Females should not breastfeed during treatment with BENDEKA and for at least 1 week after the final dose.

Most common side effects include: fatigue, fever, nausea, and vomiting, diarrhea, constipation, loss of appetite, cough, headache, weight loss, difficulty breathing, rash, mouth irritation, low red blood cells (oxygen-carrying cells), low platelets (blood-clotting cells), and decreased number of three different types of white blood cells (infection-fighting cells).

These are not all of the possible side effects of BENDEKA. For more information ask your healthcare provider.

You are encouraged to report side effects of prescription drugs to the FDA. Visit www.fda.gov/medwatch or call 1-800-FDA-1088.

Please see Full Prescribing Information starting on page 17.

▶ For more information about BENDEKA, ask your doctor, call 1-888-483-8279, or visit BENDEKA.com

Understanding serious side effects

Many people worry about serious side effects from their cancer treatment. The serious side effects listed on this page and the next have been seen in some studies with bendamustine hydrochloride. That is why it is important to talk with your doctor about your treatment and any symptoms you may have.

BENDEKA® (bendamustine HCl) MAY CAUSE BLOOD-RELATED SERIOUS SIDE EFFECTS

Lower than normal blood cell counts

- A low red blood cell count can make you feel tired easily or short of breath
- A low white blood cell count can make you more likely to get an infection
- A low platelet count can make you more likely to have bleeding that is not normal for you

Infections

- Tell your doctor if you have shortness of breath, significant fatigue, bleeding, fever, or other signs of infection

Changes in treatment

Some serious side effects may require changes in your treatment, such as:

- Lowering the amount of BENDEKA given
- Waiting longer between doses of BENDEKA
- Stopping the use of BENDEKA



Talk with your health care team if you have questions about any side effects.

Please read additional Important Safety Information throughout and on page 7 and Full Prescribing Information starting on page 17.

Who should not take BENDEKA?

Patients with a known allergic response to bendamustine polyethylene glycol 400, propylene glycol, or monothioglycerol.

Should pregnant women take BENDEKA?

Women should avoid becoming pregnant while receiving BENDEKA because it may cause fetal harm if you take BENDEKA while pregnant.

BENDEKA MAY CAUSE NON-BLOOD-RELATED SERIOUS SIDE EFFECTS

Infections and recurrence of infections

Infusion reactions

Sudden and severe allergic responses

Kidney failure due to fast breakdown of cancer cells

Liver injury

Other cancers

Leaking of BENDEKA out of your vein and into your surrounding skin

Can getting an infusion of BENDEKA cause a reaction?

Tell your doctor if you have any side effects including: rash, facial swelling, or difficulty breathing during or soon after your infusion with BENDEKA injection. These are signs of an allergic reaction. You also should tell your doctor if you have shortness of breath, significant fatigue, bleeding, bruising, fever, or other signs of infection. Also, tell your doctor if you experience nausea, vomiting, diarrhea, loss of appetite, or a yellow skin tone. In addition, your doctor will perform blood tests to see if you have low blood counts. These are lower-than-normal numbers of red blood cells, white blood cells, or platelets.



Tell your doctor or nurse right away if you have any of these side effects associated with BENDEKA because some of these effects may become serious and could be fatal if they are not treated in time.

Please read additional Important Safety Information throughout and on page 7 and Full Prescribing Information starting on page 17.

Understanding common side effects

What side effects might I expect with BENDEKA® (bendamustine HCl)?

Keep track of any side effects you may have between treatments. Be sure to mention them to your doctor and nurse at your next appointment.

MOST COMMON SIDE EFFECTS OF BENDEKA

Most common side effects include:

fatigue, fever, nausea, and vomiting, diarrhea, constipation, loss of appetite, cough, headache, weight loss, difficulty breathing, rash, mouth irritation, low red blood cells (oxygen-carrying cells), low

platelets (blood-clotting cells), and decreased number of three different types of white blood cells (infection-fighting cells).

These are not all of the possible side effects of BENDEKA. For more information ask your healthcare provider.

Please read additional Important Safety Information throughout and on page 7 and Full Prescribing Information starting on page 17.

BENDEKA is indicated for the treatment of patients with

- Chronic lymphocytic leukemia (CLL). Efficacy relative to first-line therapies other than chlorambucil has not been established.
- Indolent B-cell non-Hodgkin lymphoma (NHL) that has progressed during or within 6 months of treatment with rituximab or a rituximab-containing regimen.



Please read additional Important Safety Information throughout and on page 7 and Full Prescribing Information starting on page 17.

Commonly asked questions about BENDEKA® (bendamustine HCl)

Having a lot of questions about your treatment is normal. We hope you'll find some answers here. At the treatment center, you'll meet nurses and support staff who will also be able to answer your questions before you begin treatment.

Can I take other medications while receiving BENDEKA?

Talk with your doctor about any medications you are taking or plan to take. Some types of medication may impact the way BENDEKA works in the body.

Are there any foods I should avoid during treatment?

A healthy diet is important when you're being treated for cancer. The right diet can help you keep up your strength and energy level. But getting the right nutrition can be hard if you don't feel well. Some people lose their appetite or have trouble eating because of side effects from chemotherapy.



Try these tips to make sure you are getting the right nutrition:

- Eat several snacks during the day, rather than 3 large meals
- Eat protein-rich foods, such as yogurt, cereal, half a sandwich, a bowl of soup, cheese and crackers
- Avoid foods that make side effects worse. If you have diarrhea, for example, do not eat raw fruits and vegetables. If you have a sore throat, do not eat dry snacks or acidic foods

Tell your health care team about any concerns you have about eating. They can help you make diet changes that will help you cope with the side effects of treatment.

Can I return to work or my normal activities?

That will depend on how you respond to your treatment. Each person responds differently. Ask your doctor what is best for you.

As you return to your daily activities, let your caregiver and friends help you. Allowing friends and family to give moral and emotional support can be very helpful during your treatment.

Please read additional Important Safety Information throughout and on page 7 and Full Prescribing Information starting on page 17.

What should I do if I am having side effects from treatment?

Get in touch with your doctor or nurse right away if you have any side effects. Don't wait to share this information at your next office visit.

Tell your doctor if you have any side effects including: rash, facial swelling, or difficulty breathing during or soon after your infusion with BENDEKA injection. These are signs of an allergic reaction. You also should tell your doctor if you have shortness of breath, significant fatigue, bleeding, bruising, fever, or other signs of infection. Also, tell your doctor if you experience nausea, vomiting, diarrhea, loss of appetite, or a yellow skin tone. In addition, your doctor will perform blood tests to see if you have low blood counts. These are lower-than-normal numbers of red blood cells, white blood cells, or platelets.

Will I lose my hair?

In a safety evaluation from a clinical study for CLL, hair loss occurred in 1 of the 153 patients treated with bendamustine hydrochloride compared to 0 (zero) of the 143 patients treated with chlorambucil. In an NHL study, hair loss occurred in 3 of the 100 patients treated with bendamustine hydrochloride.

Please read additional Important Safety Information throughout and on page 7 and Full Prescribing Information starting on page 17.



Answers to questions about treatment costs

How can I find out if my insurance covers BENDEKA® (bendamustine HCl)?

TEVA ONCOLOGY OFFERS A RESOURCE CALLED CORE®



The Comprehensive Oncology Reimbursement Expertise (CORE) Program provides support as well as online tools to help make it easier to understand the reimbursement process.

The CORE hotline (1-888-587-3263) can help:

- Verify benefits and coverage
- Offer precertification and prior authorization support
- Explain coverage guidelines
- Provide support through the claims and appeals process
- Identify programs that may be able to help you pay for treatment

What if I can't afford my medicine?

The Teva Cares Foundation Patient Assistance Program provides certain Teva medications at no cost to eligible patients in the United States. Eligibility is based on patients' income and prescription insurance status.

BENDEKA is indicated for the treatment of patients with

- Chronic lymphocytic leukemia (CLL). Efficacy relative to first-line therapies other than chlorambucil has not been established.
- Indolent B-cell non-Hodgkin lymphoma (NHL) that has progressed during or within 6 months of treatment with rituximab or a rituximab-containing regimen.

Please read additional Important Safety Information throughout and on page 7 and Full Prescribing Information starting on page 17.



As part of your treatment process,
it takes about **10 minutes**
for a **BENDEKA** infusion.

 **BENDEKA**[®]
(bendamustine HCl)
injection



Important Safety Information

BENDEKA is not right for everyone: including patients with a known allergic response to bendamustine, polyethylene glycol 400, propylene glycol, or monothioglycerol.

Please read additional Important Safety Information throughout and on page 7 and Full Prescribing Information starting on page 17.



**For more information about BENDEKA[®],
please visit BENDEKA.com**

**You are encouraged to report negative side effects of prescription drugs to the FDA.
Visit www.fda.gov/medwatch or call 1-800-FDA-1088.**

**Please read additional Important Safety Information throughout and on page 7 and Full
Prescribing Information starting on page 17.**



©2019 Cephalon, Inc., a wholly-owned subsidiary of Teva Pharmaceutical Industries Ltd.
BEN-40849 December 2019

HIGHLIGHTS OF PRESCRIBING INFORMATION

These highlights do not include all the information needed to use **BENDEKA** safely and effectively. See full prescribing information for **BENDEKA**.

BENDEKA® (bendamustine hydrochloride injection), for intravenous use
Initial U.S. Approval: 2008

INDICATIONS AND USAGE

BENDEKA injection is an alkylating drug indicated for treatment of patients with:

- Chronic lymphocytic leukemia (CLL). Efficacy relative to first line therapies other than chlorambucil has not been established. (1.1)
- Indolent B-cell non-Hodgkin lymphoma (NHL) that has progressed during or within six months of treatment with rituximab or a rituximab-containing regimen. (1.2)

DOSAGE AND ADMINISTRATION

For **CLL**:

- 100 mg/m² infused intravenously over 10 minutes on Days 1 and 2 of a 28-day cycle, up to 6 cycles. (2.1)

For **NHL**:

- 120 mg/m² infused intravenously over 10 minutes on Days 1 and 2 of a 21-day cycle, up to 8 cycles. (2.2)

DOSAGE FORMS AND STRENGTHS

Injection: 100 mg/4 mL (25 mg/mL) in a multiple-dose vial. (3)

CONTRAINDICATIONS

BENDEKA is contraindicated in patients with a history of a hypersensitivity reaction to bendamustine, polyethylene glycol 400, propylene glycol, or monothioglycerol. Reactions to bendamustine hydrochloride have included anaphylaxis and anaphylactoid reactions (4, 5.3)

WARNINGS AND PRECAUTIONS

- Myelosuppression: Delay or reduce dose, and restart treatment based on ANC and platelet count recovery. (2.1, 5.1)
- Infections: Monitor for fever and other signs of infection or reactivation of infections and treat promptly. (5.2)
- Anaphylaxis and Infusion Reactions: Severe anaphylactic reactions have occurred. Monitor clinically and discontinue drug for severe reactions. Pre-medicate in subsequent cycles for milder reactions. (5.3)
- Tumor Lysis Syndrome: May lead to acute renal failure and death; anticipate and use supportive measures in patients at high risk. (5.4)

- Skin Reactions: Discontinue for severe skin reactions. Cases of SJS, DRESS and TEN, some fatal, have been reported. (5.5)
- Hepatotoxicity: Monitor liver chemistry tests prior to and during treatment. (5.6)
- Other Malignancies: Pre-malignant and malignant diseases have been reported. (5.7)
- Extravasation Injury: Take precautions to avoid extravasation, including monitoring intravenous infusion site during and after administration. (5.8)
- Embryo-Fetal Toxicity: Can cause fetal harm. Advise females of reproductive potential of the potential risk to a fetus and to use an effective method of contraception. (5.9, 8.1, 8.3)

ADVERSE REACTIONS

- Adverse reactions (frequency >5%) during infusion and within 24 hours post-infusion are nausea and fatigue. (6.1)
- Most common adverse reactions (≥15%) for CLL are anemia, thrombocytopenia, lymphopenia, leukopenia, hyperbilirubinemia, pyrexia, nausea, vomiting. (6.2, 6.3)
- Most common adverse reactions (≥15%) for NHL are lymphopenia, leukopenia, anemia neutropenia, thrombocytopenia, nausea, fatigue, vomiting, diarrhea, pyrexia, constipation, anorexia, cough, headache, weight decreased, dyspnea, rash, and stomatitis. (6.2, 6.3)

To report **SUSPECTED ADVERSE REACTIONS**, contact Teva Pharmaceuticals at 1-888-483-8279 or FDA at 1-800-FDA-1088 or <http://www.fda.gov/medwatch>.

DRUG INTERACTIONS

Consider alternative therapies that are not CYP1A2 inducers or inhibitors during treatment with **BENDEKA**. (7.1)

USE IN SPECIFIC POPULATIONS

- Lactation: Advise not to breastfeed. (8.2)
- Infertility: May impair fertility. (8.3)
- Renal Impairment: Do not use in patients with creatinine clearance <30 mL/min. (8.6)
- Hepatic Impairment: Do not use in patients with total bilirubin 1.5-3 × ULN and AST or ALT 2.5-10 × ULN, or total bilirubin > 3 × ULN. (8.7)

See 17 for **PATIENT COUNSELING INFORMATION**

Revised: 10/2019

FULL PRESCRIBING INFORMATION: CONTENTS*

1 INDICATIONS AND USAGE

- 1.1 Chronic Lymphocytic Leukemia (CLL)
- 1.2 Non-Hodgkin Lymphoma (NHL)

2 DOSAGE AND ADMINISTRATION

- 2.1 Dosing Instructions for CLL
- 2.2 Dosing Instructions for NHL
- 2.3 Preparation for Intravenous Administration
- 2.4 Admixture Stability
- 2.5 Stability of Partially Used Vials (Needle Punched Vials)

3 DOSAGE FORMS AND STRENGTHS

4 CONTRAINDICATIONS

5 WARNINGS AND PRECAUTIONS

- 5.1 Myelosuppression
- 5.2 Infections
- 5.3 Anaphylaxis and Infusion Reactions
- 5.4 Tumor Lysis Syndrome
- 5.5 Skin Reactions
- 5.6 Hepatotoxicity
- 5.7 Other Malignancies
- 5.8 Extravasation Injury
- 5.9 Embryo-Fetal Toxicity

6 ADVERSE REACTIONS

- 6.1 Clinical Trials Experience
- 6.2 Clinical Trials Experience in CLL
- 6.3 Clinical Trials Experience in NHL
- 6.4 Postmarketing Experience

7 DRUG INTERACTIONS

- 7.1 Effect of Other Drugs on **BENDEKA**

8 USE IN SPECIFIC POPULATIONS

- 8.1 Pregnancy
- 8.2 Lactation
- 8.3 Females and Males of Reproductive Potential
- 8.4 Pediatric Use
- 8.5 Geriatric Use
- 8.6 Renal Impairment
- 8.7 Hepatic Impairment

10 OVERDOSAGE

11 DESCRIPTION

12 CLINICAL PHARMACOLOGY

- 12.1 Mechanism of Action
- 12.2 Pharmacodynamics
- 12.3 Pharmacokinetics

13 NONCLINICAL TOXICOLOGY

- 13.1 Carcinogenesis, Mutagenesis, Impairment of Fertility

14 CLINICAL STUDIES

- 14.1 Chronic Lymphocytic Leukemia (CLL)
- 14.2 Non-Hodgkin Lymphoma (NHL)

15 REFERENCES

16 HOW SUPPLIED/STORAGE AND HANDLING

- 16.1 Safe Handling and Disposal
- 16.2 How Supplied
- 16.3 Storage

17 PATIENT COUNSELING INFORMATION

*Sections or subsections omitted from the full prescribing information are not listed.

FULL PRESCRIBING INFORMATION

1 INDICATIONS AND USAGE

1.1 Chronic Lymphocytic Leukemia (CLL)

BENDEKA® is indicated for the treatment of patients with chronic lymphocytic leukemia. Efficacy relative to first line therapies other than chlorambucil has not been established.

1.2 Non-Hodgkin Lymphoma (NHL)

BENDEKA is indicated for the treatment of patients with indolent B-cell non-Hodgkin lymphoma that has progressed during or within six months of treatment with rituximab or a rituximab-containing regimen.

2 DOSAGE AND ADMINISTRATION

2.1 Dosing Instructions for CLL

Recommended Dosage:

The recommended dose is 100 mg/m² administered intravenously over 10 minutes on Days 1 and 2 of a 28-day cycle, up to 6 cycles.

Dose Delays, Dose Modifications and Reinitiation of Therapy for CLL:

Delay BENDEKA administration in the event of Grade 4 hematologic toxicity or clinically significant greater than or equal to Grade 2 non-hematologic toxicity. Once non-hematologic toxicity has recovered to less than or equal to Grade 1 and/or the blood counts have improved [Absolute Neutrophil Count (ANC) greater than or equal to 1 x 10⁹/L, platelets greater than or equal to 75 x 10⁹/L], reinitiate BENDEKA (bendamustine hydrochloride) injection at the discretion of the treating physician. In addition, consider dose reduction. [see *Warnings and Precautions* (5.1)]

Dose modifications for hematologic toxicity: for Grade 3 or greater toxicity, reduce the dose to 50 mg/m² on Days 1 and 2 of each cycle; if Grade 3 or greater toxicity recurs, reduce the dose to 25 mg/m² on Days 1 and 2 of each cycle.

Dose modifications for non-hematologic toxicity: for clinically significant Grade 3 or greater toxicity, reduce the dose to 50 mg/m² on Days 1 and 2 of each cycle.

Consider dose re-escalation in subsequent cycles at the discretion of the treating physician.

2.2 Dosing Instructions for NHL

Recommended Dosage:

The recommended dose is 120 mg/m² administered intravenously over 10 minutes on Days 1 and 2 of a 21-day cycle, up to 8 cycles.

Dose Delays, Dose Modifications and Reinitiation of Therapy for NHL:

Delay BENDEKA administration in the event of a Grade 4 hematologic toxicity or clinically significant greater than or equal to Grade 2 non-hematologic toxicity. Once non-hematologic toxicity has recovered to less than or equal to Grade 1 and/or the blood counts have improved [Absolute Neutrophil Count (ANC) greater than or equal to 1 x 10⁹/L, platelets greater than or equal to 75 x 10⁹/L], reinitiate BENDEKA at the discretion of the treating physician. In addition, consider dose reduction. [see *Warnings and Precautions* (5.1)]

Dose modifications for hematologic toxicity: for Grade 4 toxicity, reduce the dose to 90 mg/m² on Days 1 and 2 of each cycle; if Grade 4 toxicity recurs, reduce the dose to 60 mg/m² on Days 1 and 2 of each cycle.

Dose modifications for non-hematologic toxicity: for Grade 3 or greater toxicity, reduce the dose to 90 mg/m² on Days 1 and 2 of each cycle; if Grade 3 or greater toxicity recurs, reduce the dose to 60 mg/m² on Days 1 and 2 of each cycle.

2.3 Preparation for Intravenous Administration

BENDEKA is a cytotoxic drug. Follow applicable special handling and disposal procedures.¹

BENDEKA is in a multiple-dose vial. At room temperature, BENDEKA is a clear, and colorless to yellow ready-to-dilute solution. Store BENDEKA at recommended refrigerated storage conditions (2-8°C or 36-46°F). When refrigerated, the contents may partially freeze. Allow the vial to reach room temperature (15-30°C or 59-86°F) prior to use. Do not use the product if particulate matter is observed after achieving room temperature.

Intravenous Infusion

• Aseptically withdraw the volume needed for the required dose from the 25 mg/mL solution as per Table A below and immediately transfer the solution to a 50 mL infusion bag of one of the following diluents:

- 0.9% Sodium Chloride Injection, USP; or
- 2.5% Dextrose/0.45% Sodium Chloride Injection, USP; or
- 5% Dextrose Injection, USP.

The resulting final concentration of bendamustine hydrochloride in the infusion bag should be within 1.85 mg/mL – 5.6 mg/mL. After transferring, thoroughly mix the contents of the infusion bag. The admixture should be a clear, and colorless to yellow solution.

No other diluents have been shown to be compatible. The 5% Dextrose Injection, USP, offers a sodium-free method of administration for patients with certain medical conditions requiring restricted sodium intake.

Table A: Volume (mL) of BENDEKA required for dilution into 50 mL of 0.9% saline, or 0.45% saline/2.5% dextrose or 5% dextrose for a given dose (mg/m²) and Body Surface Area (m²)

Body Surface Area (m ²)	Volume of BENDEKA to withdraw (mL)					
	120 mg/m ²	100 mg/m ²	90 mg/m ²	60 mg/m ²	50 mg/m ²	25 mg/m ²
1	4.8	4	3.6	2.4	2	1
1.1	5.3	4.4	4	2.6	2.2	1.1
1.2	5.8	4.8	4.3	2.9	2.4	1.2
1.3	6.2	5.2	4.7	3.1	2.6	1.3
1.4	6.7	5.6	5	3.4	2.8	1.4
1.5	7.2	6	5.4	3.6	3	1.5
1.6	7.7	6.4	5.8	3.8	3.2	1.6
1.7	8.2	6.8	6.1	4.1	3.4	1.7
1.8	8.6	7.2	6.5	4.3	3.6	1.8
1.9	9.1	7.6	6.8	4.6	3.8	1.9
2	9.6	8	7.2	4.8	4	2
2.1	10.1	8.4	7.6	5	4.2	2.1
2.2	10.6	8.8	7.9	5.3	4.4	2.2
2.3	11	9.2	8.3	5.5	4.6	2.3
2.4	11.5	9.6	8.6	5.8	4.8	2.4
2.5	12	10	9	6	5	2.5
2.6	12.5	10.4	9.4	6.2	5.2	2.6
2.7	13	10.8	9.7	6.5	5.4	2.7
2.8	13.4	11.2	10.1	6.7	5.6	2.8
2.9	13.9	11.6	10.4	7	5.8	2.9
3	14.4	12	10.8	7.2	6	3

Parenteral drug products should be inspected visually for particulate matter and discoloration prior to administration whenever solution and container permit. Any unused solution should be discarded according to institutional procedures for antineoplastics.

2.4 Admixture Stability

BENDEKA contains no antimicrobial preservative. Prepare the admixture as close as possible to the time of patient administration.

If diluted with 0.9% Sodium Chloride Injection, USP, or 2.5% Dextrose/0.45% Sodium Chloride Injection, USP, the final admixture is stable for 24 hours when stored refrigerated (2-8°C or 36-46°F) or for 6 hours when stored at room temperature (15-30°C or 59-86°F) and room light. Administration of diluted BENDEKA (bendamustine hydrochloride) injection must be completed within this period of time.

In the event that 5% Dextrose Injection, USP is utilized, the final admixture is stable for 24 hours when stored refrigerated (2-8°C or 36-46°F) or for only 3 hours when stored at room temperature (15-30°C or 59-86°F) and room light. Administration of diluted BENDEKA must be completed within this period of time.

Retain the partially used vial in original package to protect from light and store refrigerated (2-8°C or 36-46°F) if additional dose withdrawal from the same vial is intended.

2.5 Stability of Partially Used Vials (Needle Punched Vials)

BENDEKA is supplied in a multiple-dose vial. Although it does not contain any antimicrobial preservative, BENDEKA is bacteriostatic. The partially used vials are stable for up to 28 days when stored in its original carton under refrigeration (2-8°C or 36-46°F). Each vial is not recommended for more than a total of six (6) dose withdrawals.

After first use, store the partially used vial in the refrigerator in the original carton at 2-8°C or 36-46°F and then discard after 28 days.

3 DOSAGE FORMS AND STRENGTHS

Injection: 100 mg/4 mL (25 mg/mL) as a clear and colorless to yellow ready-to-dilute solution in a multiple-dose vial.

4 CONTRAINDICATIONS

BENDEKA is contraindicated in patients with a known hypersensitivity (e.g., anaphylactic and anaphylactoid reactions) to bendamustine, polyethylene glycol 400, propylene glycol, or monothiolglycerol. [see *Warnings and Precautions* (5.3)]

5 WARNINGS AND PRECAUTIONS

5.1 Myelosuppression

Bendamustine hydrochloride caused severe myelosuppression (Grade 3-4) in 98% of patients in the two NHL studies (see Table 4). Three patients (2%) died from myelosuppression-related adverse reactions; one each from neutropenic sepsis, diffuse alveolar hemorrhage with Grade 3 thrombocytopenia, and pneumonia from an opportunistic infection (CMV).

BENDEKA causes myelosuppression. Monitor complete blood counts, including leukocytes, platelets, hemoglobin (Hgb), and neutrophils frequently. In the clinical trials, blood counts were monitored every week initially. Hematologic nadirs occurred predominantly in the third week of therapy. Myelosuppression may require dose delays and/or subsequent dose reductions if recovery to the recommended values has not occurred by the first day of the next scheduled cycle. Prior to the initiation of the next cycle of therapy, the ANC should be ≥ 1 x 10⁹/L and the platelet count should be ≥ 75 x 10⁹/L. [see *Dosage and Administration* (2.1)]

5.2 Infections

Infection, including pneumonia, sepsis, septic shock, hepatitis and death has occurred in adult and pediatric patients in clinical trials and in postmarketing reports for bendamustine hydrochloride. Patients with myelosuppression following treatment with bendamustine hydrochloride are more susceptible to infections. Advise patients with myelosuppression following BENDEKA treatment to contact a physician immediately if they have symptoms or signs of infection.

Patients treated with BENDEKA are at risk for reactivation of infections including (but not limited to) hepatitis B, cytomegalovirus, Mycobacterium tuberculosis, and herpes zoster. Patients should undergo appropriate measures (including clinical and laboratory monitoring, prophylaxis, and treatment) for infection and infection reactivation prior to administration.

5.3 Anaphylaxis and Infusion Reactions

Infusion reactions to bendamustine hydrochloride have occurred commonly in clinical trials. Symptoms include fever, chills, pruritus and rash. In rare instances, severe anaphylactic and anaphylactoid reactions have occurred, particularly in the second and subsequent cycles of therapy. Monitor clinically and discontinue drug for severe reactions. Ask patients about symptoms suggestive of infusion reactions after their first cycle of therapy. Patients who experienced Grade 3 or worse allergic-type reactions were not typically rechallenged. Consider measures to prevent severe reactions, including antihistamines, antipyretics and corticosteroids in subsequent cycles in patients who have experienced Grade 1 or 2 infusion reactions. Discontinue BENDEKA for patients with Grade 4 infusion reactions. Consider discontinuation for Grade 3 infusion reactions as clinically appropriate considering individual benefits, risks, and supportive care.

5.4 Tumor Lysis Syndrome

Tumor lysis syndrome associated with bendamustine hydrochloride has occurred in patients in clinical trials and in postmarketing reports. The onset tends to be within the first treatment cycle of bendamustine hydrochloride and, without intervention, may lead to acute renal failure and death. Preventive measures include vigorous hydration and close monitoring of blood chemistry, particularly potassium and uric acid levels. Allopurinol has also been used during the beginning of bendamustine hydrochloride therapy. However, there may be an increased risk of severe skin toxicity when bendamustine hydrochloride and allopurinol are administered concomitantly. [see Warnings and Precautions (5.5)]

5.5 Skin Reactions

Fatal and serious skin reactions have been reported with bendamustine hydrochloride injection treatment in clinical trials and postmarketing safety reports, including toxic skin reactions [Stevens-Johnson Syndrome (SJS), toxic epidermal necrolysis (TEN), and drug reaction with eosinophilia and systemic symptoms (DRESS)], bullous exanthema, and rash. Events occurred when bendamustine hydrochloride injection was given as a single agent and in combination with other anticancer agents or allopurinol. Where skin reactions occur, they may be progressive and increase in severity with further treatment. Monitor patients with skin reactions closely. If skin reactions are severe or progressive, withhold or discontinue BENDEKA.

5.6 Hepatotoxicity

Fatal and serious cases of liver injury have been reported with bendamustine hydrochloride injection. Combination therapy, progressive disease or reactivation of hepatitis B were confounding factors in some patients [see Warnings and Precautions (5.2)]. Most cases were reported within the first three months of starting therapy. Monitor liver chemistry tests prior to and during BENDEKA therapy.

5.7 Other Malignancies

There are reports of pre-malignant and malignant diseases that have developed in patients who have been treated with bendamustine hydrochloride, including myelodysplastic syndrome, myeloproliferative disorders, acute myeloid leukemia and bronchial carcinoma. The association with bendamustine hydrochloride therapy has not been determined.

5.8 Extravasation Injury

Bendamustine hydrochloride extravasations have been reported in postmarketing resulting in hospitalizations from erythema, marked swelling, and pain. Assure good venous access prior to starting drug infusion and monitor the intravenous infusion site for redness, swelling, pain, infection, and necrosis during and after administration of BENDEKA.

5.9 Embryo-Fetal Toxicity

Based on findings from animal reproduction studies and the drug's mechanism of action, BENDEKA can cause fetal harm when administered to a pregnant woman. Single intraperitoneal doses of bendamustine (that approximated the maximum recommended human dose based on body surface area) to pregnant mice and rats during organogenesis caused adverse developmental outcomes, including an increase in resorptions, skeletal and visceral malformations, and decreased fetal body weights. Advise pregnant women of the potential risk to a fetus. Advise females of reproductive potential to use an effective method of contraception during treatment with BENDEKA and for at least 6 months after the final dose. Advise males with female partners of reproductive potential to use effective contraception during treatment with BENDEKA and for at least 3 months after the final dose. [see Use in Specific Populations (8.1, 8.3) and Clinical Pharmacology (12.1)]

6 ADVERSE REACTIONS

The following clinically significant adverse reactions have been associated with bendamustine hydrochloride in clinical trials and are discussed in greater detail in other sections of the prescribing information.

- Myelosuppression [see Warnings and Precautions (5.1)]
- Infections [see Warnings and Precautions (5.2)]
- Anaphylaxis and Infusion Reactions [see Warnings and Precautions (5.3)]

- Tumor Lysis Syndrome [see Warnings and Precautions (5.4)]
- Skin Reactions [see Warnings and Precautions (5.5)]
- Hepatotoxicity [see Warnings and Precautions (5.6)]
- Other Malignancies [see Warnings and Precautions (5.7)]
- Extravasation Injury [see Warnings and Precautions (5.8)]

6.1 Clinical Trials Experience

Because clinical trials are conducted under widely varying conditions, adverse reaction rates observed in the clinical trials of a drug cannot be directly compared to rates in the clinical trials of another drug and may not reflect the rates observed in practice.

The data described below reflect exposure to bendamustine hydrochloride in 329 patients who participated in an actively controlled trial (N=153) for the treatment of CLL and two single arm studies (N=176) for the treatment of indolent B cell NHL. Because clinical trials are conducted under widely varying conditions, adverse reaction rates observed in the clinical trials of a drug cannot be directly compared to rates in the clinical trials of another drug and may not reflect the rates observed in practice.

The safety of BENDEKA administered IV as a 50 mL admixture over a 10-minute infusion is supported by clinical trials using bendamustine hydrochloride administered IV as a 500 mL admixture over 30-60 minutes infusion time, as well as an open-label, crossover study in 81 'end-of-life' cancer patients treated with BENDEKA. In total, safety data from clinical studies are available from over 400 cancer patients exposed to bendamustine hydrochloride at doses in the range used in the treatment of CLL and NHL.

No clinically significant differences in the adverse reaction profile were noted among bendamustine hydrochloride administered as a 500 mL admixture over standard infusion time (30-60 minutes) and BENDEKA administered as a 50 mL admixture in a 'short-time' infusion over 10 minutes.

The safety and tolerability of BENDEKA was evaluated in an 8-week clinical study of BENDEKA in 81 'end-of-life' cancer patients, diagnosed with solid tumors and hematologic malignancies (excluding CLL). The population was 40-82 years of age, 58% females, 84% white, 12.3% Black, 1.2% Asian and 2.5% were classified as 'other'. BENDEKA was administered IV at a 120 mg/m² dose as a 50 mL admixture over 10 minutes. Patients in the study received BENDEKA (50 mL IV, over 10 minutes) or bendamustine hydrochloride (500 mL IV, over 60 minutes) on Days 1 and 2 every 28 days for two consecutive 2-day cycles.

Adverse reactions (any grade) that occurred with a frequency greater than 5% during BENDEKA infusion and within one hour post-infusion were nausea (8.2%) and fatigue (5.5%).

Adverse reactions (any grade) that occurred with a frequency greater than 5% within 24 hours of BENDEKA were nausea (10.9%) and fatigue (8.2%).

Adverse reactions leading to study withdrawal in 4 patients receiving BENDEKA were pyrexia (1.2%), nausea (1.2%), vomiting (1.2%), pneumonia (1.2%) and fatigue (1.2%).

6.2 Clinical Trials Experience in CLL

The data described below reflect exposure to bendamustine hydrochloride in 153 patients. Bendamustine hydrochloride was studied in an active-controlled randomized trial. The population was 45-77 years of age, 63% male, 100% white, and had treatment naïve CLL. All patients started the study at a dose of 100 mg/m² intravenously over 30 minutes on Days 1 and 2 every 28 days.

Adverse reactions were reported according to NCI CTC v2.0. In the randomized CLL clinical study, non-hematologic adverse reactions (any grade) in the bendamustine hydrochloride group that occurred with a frequency greater than 15% were pyrexia (24%), nausea (20%), and vomiting (16%).

Other adverse reactions seen frequently in one or more studies included asthenia, fatigue, malaise, and weakness; dry mouth; somnolence; cough; constipation; headache; mucosal inflammation and stomatitis.

Worsening hypertension was reported in 4 patients treated with bendamustine hydrochloride in the randomized CLL clinical study and in none treated with chlorambucil. Three of these 4 adverse reactions were described as a hypertensive crisis and were managed with oral medications and resolved.

The most frequent adverse reactions leading to study withdrawal for patients receiving bendamustine hydrochloride were hypersensitivity (2%) and pyrexia (1%). Table 1 contains the treatment emergent adverse reactions, regardless of attribution, that were reported in ≥ 5% of patients in either treatment group in the randomized CLL clinical study.

Table 1: Non-Hematologic Adverse Reactions Occurring in Randomized CLL Clinical Study in at Least 5% of Patients

Body System Adverse Reaction	Number (%) of patients			
	Bendamustine Hydrochloride (N=153)		Chlorambucil (N=143)	
	All Grades	Grade 3/4	All Grades	Grade 3/4
Total number of patients with at least 1 adverse reaction	121 (79)	52 (34)	96 (67)	25 (17)
Gastrointestinal disorders				
Nausea	31 (20)	1 (<1)	21 (15)	1 (<1)
Vomiting	24 (16)	1 (<1)	9 (6)	0
Diarrhea	14 (9)	2 (1)	5 (3)	0

continued

BENDEKA® (bendamustine hydrochloride) injection

Body System Adverse Reaction	Number (%) of patients			
	Bendamustine Hydrochloride (N=153)		Chlorambucil (N=143)	
	All Grades	Grade 3/4	All Grades	Grade 3/4
General disorders and administration site conditions				
Pyrexia	36 (24)	6 (4)	8 (6)	2 (1)
Fatigue	14 (9)	2 (1)	8 (6)	0
Asthenia	13 (8)	0	6 (4)	0
Chills	9 (6)	0	1 (<1)	0
Immune system disorders				
Hypersensitivity	7 (5)	2 (1)	3 (2)	0
Infections and infestations				
Nasopharyngitis	10 (7)	0	12 (8)	0
Infection	9 (6)	3 (2)	1 (<1)	1 (<1)
Herpes simplex	5 (3)	0	7 (5)	0
Investigations				
Weight decreased	11 (7)	0	5 (3)	0
Metabolism and nutrition disorders				
Hyperuricemia	11 (7)	3 (2)	2 (1)	0
Respiratory, thoracic and mediastinal disorders				
Cough	6 (4)	1 (<1)	7 (5)	1 (<1)
Skin and subcutaneous tissue disorders				
Rash	12 (8)	4 (3)	7 (5)	3 (2)
Pruritus	8 (5)	0	2 (1)	0

The Grade 3 and 4 hematology laboratory test values by treatment group in the randomized CLL clinical study are described in Table 2. These findings confirm the myelosuppressive effects seen in patients treated with bendamustine hydrochloride. Red blood cell transfusions were administered to 20% of patients receiving bendamustine hydrochloride compared with 6% of patients receiving chlorambucil.

Table 2: Incidence of Hematology Laboratory Abnormalities in Patients Who Received bendamustine hydrochloride or Chlorambucil in the Randomized CLL Clinical Study

Laboratory Abnormality	Bendamustine Hydrochloride N=150		Chlorambucil N=141	
	All Grades n (%)	Grade 3/4 n (%)	All Grades n (%)	Grade 3/4 n (%)
Hemoglobin Decreased	134 (89)	20 (13)	115 (82)	12 (9)
Platelets Decreased	116 (77)	16 (11)	110 (78)	14 (10)
Leukocytes Decreased	92 (61)	42 (28)	26 (18)	4 (3)
Lymphocytes Decreased	102 (68)	70 (47)	27 (19)	6 (4)
Neutrophils Decreased	113 (75)	65 (43)	86 (61)	30 (21)

In the randomized CLL trial, 34% of patients had bilirubin elevations, some without associated significant elevations in AST and ALT. Grade 3 or 4 increased bilirubin occurred in 3% of patients. Increases in AST and ALT of Grade 3 or 4 were limited to 1% and 3% of patients, respectively. Patients treated with bendamustine hydrochloride may also have changes in their creatinine levels. If abnormalities are detected, monitoring of these parameters should be continued to ensure that significant deterioration does not occur.

6.3 Clinical Trials Experience in NHL

The data described below reflect exposure to bendamustine hydrochloride in 176 patients with indolent B-cell NHL treated in two single-arm studies. The population was 31-84 years of age, 60% male, and 40% female. The race distribution was 89% White, 7% Black, 3% Hispanic, 1% other, and <1% Asian. These patients received bendamustine hydrochloride at a dose of 120 mg/m² intravenously on Days 1 and 2 for up to eight 21-day cycles.

The adverse reactions occurring in at least 5% of the NHL patients, regardless of severity, are shown in Table 3. The most common non-hematologic adverse reactions (≥30%) were nausea (75%), fatigue (57%), vomiting (40%), diarrhea (37%) and pyrexia (34%). The most common non-hematologic Grade 3 or 4 adverse reactions (≥5%) were fatigue (11%), febrile neutropenia (6%), and pneumonia, hypokalemia and dehydration, each reported in 5% of patients.

BENDEKA® (bendamustine hydrochloride) injection

Table 3: Non-Hematologic Adverse Reactions Occurring in at Least 5% of NHL Patients Treated with bendamustine hydrochloride by System Organ Class and Preferred Term (N=176)

Body System Adverse Reaction	Number (%) of patients*	
	All Grades	Grade 3/4
Total number of patients with at least 1 adverse reaction	176 (100)	94 (53)
Cardiac Disorders		
Tachycardia	13 (7)	0
Gastrointestinal disorders		
Nausea	132 (75)	7 (4)
Vomiting	71 (40)	5 (3)
Diarrhea	65 (37)	6 (3)
Constipation	51 (29)	1 (<1)
Stomatitis	27 (15)	1 (<1)
Abdominal pain	22 (13)	2 (1)
Dyspepsia	20 (11)	0
Gastroesophageal reflux disease	18 (10)	0
Dry mouth	15 (9)	1 (<1)
Abdominal pain upper	8 (5)	0
Abdominal distension	8 (5)	0
General disorders and administration site conditions		
Fatigue	101 (57)	19 (11)
Pyrexia	59 (34)	3 (2)
Chills	24 (14)	0
Edema peripheral	23 (13)	1 (<1)
Asthenia	19 (11)	4 (2)
Chest pain	11 (6)	1 (<1)
Infusion site pain	11 (6)	0
Pain	10 (6)	0
Catheter site pain	8 (5)	0
Infections and infestations		
Herpes zoster	18 (10)	5 (3)
Upper respiratory tract infection	18 (10)	0
Urinary tract infection	17 (10)	4 (2)
Sinusitis	15 (9)	0
Pneumonia	14 (8)	9 (5)
Febrile neutropenia	11 (6)	11 (6)
Oral candidiasis	11 (6)	2 (1)
Nasopharyngitis	11 (6)	0
Investigations		
Weight decreased	31 (18)	3 (2)
Metabolism and nutrition disorders		
Anorexia	40 (23)	3 (2)
Dehydration	24 (14)	8 (5)
Decreased appetite	22 (13)	1 (<1)
Hypokalemia	15 (9)	9 (5)
Musculoskeletal and connective tissue disorders		
Back pain	25 (14)	5 (3)
Arthralgia	11 (6)	0
Pain in extremity	8 (5)	2 (1)
Bone pain	8 (5)	0
Nervous system disorders		
Headache	36 (21)	0
Dizziness	25 (14)	0
Dysgeusia	13 (7)	0
Psychiatric disorder		
Insomnia	23 (13)	0
Anxiety	14 (8)	1 (<1)
Depression	10 (6)	0

continued

BENDEKA® (bendamustine hydrochloride) injection

Body System	Number (%) of patients*	
	All Grades	Grade 3/4
Respiratory, thoracic and mediastinal disorders		
Cough	38 (22)	1 (<1)
Dyspnea	28 (16)	3 (2)
Pharyngolaryngeal pain	14 (8)	1 (<1)
Wheezing	8 (5)	0
Nasal congestion	8 (5)	0
Skin and subcutaneous tissue disorders		
Rash	28 (16)	1 (<1)
Pruritus	11 (6)	0
Dry skin	9 (5)	0
Night sweats	9 (5)	0
Hyperhidrosis	8 (5)	0
Vascular disorders		
Hypotension	10 (6)	2 (1)

*Patients may have reported more than 1 adverse reaction.

NOTE: Patients counted only once in each preferred term category and once in each system organ class category.

Hematologic toxicities, based on laboratory values and CTC grade, in NHL patients treated in both single arm studies combined are described in Table 4. Clinically important chemistry laboratory values that were new or worsened from baseline and occurred in >1% of patients at grade 3 or 4, in NHL patients treated in both single arm studies combined were hyperglycemia (3%), elevated creatinine (2%), hyponatremia (2%), and hypocalcemia (2%).

Table 4: Incidence of Hematology Laboratory Abnormalities in Patients Who Received bendamustine hydrochloride in the NHL Studies

Hematology Variable	Percent of Patients	
	All Grades	Grade 3/4
Lymphocytes Decreased	99	94
Leukocytes Decreased	94	56
Hemoglobin Decreased	88	11
Neutrophils Decreased	86	60
Platelets Decreased	86	25

In both studies, serious adverse reactions, regardless of causality, were reported in 37% of patients receiving bendamustine hydrochloride. The most common serious adverse reactions occurring in ≥5% of patients were febrile neutropenia and pneumonia. Other important serious adverse reactions reported in clinical trials and/or postmarketing experience were acute renal failure, cardiac failure, hypersensitivity, skin reactions, pulmonary fibrosis, and myelodysplastic syndrome.

Serious drug-related adverse reactions reported in clinical trials included myelosuppression, infection, pneumonia, tumor lysis syndrome and infusion reactions. [see **Warnings and Precautions (5)**] Adverse reactions occurring less frequently but possibly related to bendamustine hydrochloride treatment were hemolysis, dysgeusia/taste disorder, atypical pneumonia, sepsis, herpes zoster, erythema, dermatitis, and skin necrosis.

6.4 Postmarketing Experience

The following adverse reactions have been identified during post-approval use of bendamustine hydrochloride. Because these reactions are reported voluntarily from a population of uncertain size, it is not always possible to reliably estimate their frequency or establish a causal relationship to drug exposure.

Blood and lymphatic systems disorders: Pancytopenia.

Cardiovascular disorders: Atrial fibrillation, congestive heart failure (some fatal), myocardial infarction (some fatal), palpitation.

General disorders and administration site conditions: Injection site reactions (including phlebitis, pruritus, irritation, pain, swelling), infusion site reactions (including phlebitis, pruritus, irritation, pain, swelling).

Immune system disorders: Anaphylaxis.

Infections and infestations: Pneumocystis jiroveci pneumonia.

Respiratory, thoracic and mediastinal disorders: Pneumonitis.

Skin and subcutaneous tissue disorders: Stevens-Johnson syndrome, Toxic epidermal necrolysis, DRESS (Drug reaction with eosinophilia and systemic symptoms). [see **Warnings and Precautions (5.5)**]

7 DRUG INTERACTIONS

7.1 Effect of Other Drugs on BENDEKA

CYP1A2 Inhibitors

The coadministration of BENDEKA with CYP1A2 inhibitors may increase bendamustine plasma concentrations and may result in increased incidence of adverse reactions with BENDEKA [see **Clinical Pharmacology (12.3)**]. Consider alternative therapies that are not CYP1A2 inhibitors during treatment with BENDEKA.

BENDEKA® (bendamustine hydrochloride) injection

CYP1A2 Inducers

The coadministration of BENDEKA with CYP1A2 inducers may decrease bendamustine plasma concentrations and may result in decreased efficacy of BENDEKA [see **Clinical Pharmacology (12.3)**]. Consider alternative therapies that are not CYP1A2 inducers during treatment with BENDEKA.

8 USE IN SPECIFIC POPULATIONS

8.1 Pregnancy

Risk Summary

In animal reproduction studies, intraperitoneal administration of bendamustine to pregnant mice and rats during organogenesis at doses 0.6 to 1.8 times the maximum recommended human dose (MRHD) resulted in embryo-fetal and/or infant mortality, structural abnormalities, and alterations to growth (see **Data**). There are no available data on bendamustine hydrochloride use in pregnant women to evaluate for a drug-associated risk of major birth defects, miscarriage or adverse maternal or fetal outcomes. Advise pregnant women of the potential risk to a fetus.

The estimated background risk of major birth defects and miscarriage for the indicated population is unknown. All pregnancies have a background risk of birth defect, loss, or other adverse outcomes. In the U.S. general population, the estimated background risk of major birth defects and miscarriage in clinically recognized pregnancies is 2-4% and 15-20%, respectively.

Data

Animal Data

Bendamustine hydrochloride was intraperitoneally administered once to mice from 210 mg/m² (approximately 1.8 times the MRHD) during organogenesis and caused an increase in resorptions, skeletal and visceral malformations (exencephaly, cleft palates, accessory rib, and spinal deformities) and decreased fetal body weights. This dose did not appear to be maternally toxic and lower doses were not evaluated. Repeat intraperitoneal administration of bendamustine hydrochloride to mice on gestation days 7-11 resulted in an increase in resorptions from 75 mg/m² (approximately 0.6 times the MRHD) and an increase in abnormalities from 112.5 mg/m² (approximately 0.9 times the MRHD), similar to those seen after a single intraperitoneal administration.

Bendamustine hydrochloride was intraperitoneally administered once to rats from 120 mg/m² (approximately the MRHD) on gestation days 4, 7, 9, 11, or 13 and caused embryo and fetal lethality as indicated by increased resorptions and a decrease in live fetuses. A significant increase in external (effect on tail, head, and herniation of external organs [exomphalos]) and internal (hydronephrosis and hydrocephalus) malformations were seen in dosed rats.

8.2 Lactation

Risk Summary

There are no data on the presence of bendamustine hydrochloride or its metabolites in either human or animal milk, the effects on the breastfed child, or the effects on milk production. Because of the potential for serious adverse reactions in the breastfed child, advise patients that breastfeeding is not recommended during treatment with BENDEKA, and for at least 1 week after the last dose.

8.3 Females and Males of Reproductive Potential

BENDEKA can cause fetal harm when administered to a pregnant woman [see **Warnings and Precautions (5.9)** and **Use in Specific Populations (8.1)**].

Pregnancy Testing

Pregnancy testing is recommended for females of reproductive potential prior to initiation BENDEKA [see **Use in Specific Populations (8.1)**].

Contraception

Females

BENDEKA can cause embryo-fetal harm when administered to pregnant women [see **Use in Specific Populations (8.1)**]. Advise female patients of reproductive potential to use effective contraception during treatment with BENDEKA and for 6 months after the final dose.

Males

Based on genotoxicity findings, advise males with female partners of reproductive potential to use effective contraception during treatment with BENDEKA and for at least 3 months after the final dose [see **Nonclinical Toxicology (13.1)**].

Infertility

Males

Based on findings from clinical studies, BENDEKA may impair male fertility. Impaired spermatogenesis, azoospermia, and total germinal aplasia have been reported in male patients treated with alkylating agents, especially in combination with other drugs. In some instances spermatogenesis may return in patients in remission, but this may occur only several years after intensive chemotherapy has been discontinued. Advise patients of the potential risk to their reproductive capacities.

Based on findings from animal studies, BENDEKA may impair male fertility due to an increase in morphologically abnormal spermatozoa. The long-term effects of BENDEKA on male fertility, including the reversibility of adverse effects, have not been studied (see **Nonclinical Toxicology (13.1)**).

8.4 Pediatric Use

Safety and effectiveness in pediatric patients have not been established.

Safety, pharmacokinetics and efficacy were assessed in a single open-label trial (NCT01088984) in patients aged 1-19 years with relapsed or refractory acute leukemia, including 27 patients with acute lymphocytic leukemia (ALL) and 16 patients with acute myeloid leukemia (AML). Bendamustine hydrochloride was administered as an intravenous infusion over 60 minutes on Days 1 and 2 of each 21-day cycle. There was no treatment response (CR+ CRp) in any patient. The safety profile in these patients was consistent with that seen in adults, and no new safety signals were identified.

The pharmacokinetics of bendamustine in 43 patients, aged 1 to 19 years (median age of 10 years) were within range of values previously observed in adults given the same dose based on body surface area.

8.5 Geriatric Use

No overall differences in safety were observed between patients ≥ 65 years of age and younger patients. Efficacy was lower in patients 65 and over with CLL receiving bendamustine hydrochloride based upon an overall response rate of 47% for patients 65 and over and 70% for younger patients. Progression free survival was also longer in younger patients with CLL receiving bendamustine (19 months vs. 12 months). No overall differences in efficacy in patients non-Hodgkin Lymphoma were observed between geriatric patients and younger patients.

8.6 Renal Impairment

Do not use BENDEKA in patients with creatinine clearance (CLCr) < 30 mL/min [see *Clinical Pharmacology* (12.3)].

8.7 Hepatic Impairment

Do not use BENDEKA in patients with AST or ALT 2.5 - $10 \times$ upper limit of normal (ULN) and total bilirubin 1.5 - $3 \times$ ULN, or total bilirubin $> 3 \times$ ULN [see *Clinical Pharmacology* (12.3)].

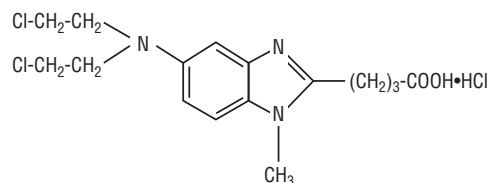
10 OVERDOSAGE

The intravenous LD₅₀ of bendamustine hydrochloride is 240 mg/m² in the mouse and rat. Toxicities included sedation, tremor, ataxia, convulsions and respiratory distress. Across all clinical experience, the reported maximum single dose received was 280 mg/m². Three of four patients treated at this dose showed ECG changes considered dose-limiting at 7 and 21 days post-dosing. These changes included QT prolongation (one patient), sinus tachycardia (one patient), ST and T wave deviations (two patients) and left anterior fascicular block (one patient). Cardiac enzymes and ejection fractions remained normal in all patients.

No specific antidote for bendamustine hydrochloride overdose is known. Management of overdosage should include general supportive measures, including monitoring of hematologic parameters and ECGs.

11 DESCRIPTION

BENDEKA (bendamustine hydrochloride) injection is an alkylating agent. The chemical name of bendamustine hydrochloride is 1H-benzimidazole-2-butanoic acid, 5-[bis(2-chloroethyl)amino]-1 methyl-, monohydrochloride. Its empirical molecular formula is C₁₆H₂₁Cl₂N₃O₂ · HCl, and the molecular weight is 394.7. Bendamustine hydrochloride contains a mechlorethamine group and a benzimidazole heterocyclic ring with a butyric acid substituent, and has the following structural formula:



BENDEKA (bendamustine hydrochloride) injection for intravenous use is supplied as a sterile, clear, and colorless to yellow ready-to-dilute solution in a multiple-dose clear glass vial. Each milliliter contains 25 mg of bendamustine hydrochloride, 0.1 mL of Propylene Glycol, USP, 5 mg of Monothioglycerol, NF, in Polyethylene Glycol 400, NF. Sodium hydroxide may have been used to adjust the acidity of polyethylene glycol 400.

12 CLINICAL PHARMACOLOGY

12.1 Mechanism of Action

Bendamustine is a bifunctional mechlorethamine derivative containing a purine-like benzimidazole ring. Mechlorethamine and its derivatives form electrophilic alkyl groups. These groups form covalent bonds with electron-rich nucleophilic moieties, resulting in interstrand DNA crosslinks. The bifunctional covalent linkage can lead to cell death via several pathways. Bendamustine is active against both quiescent and dividing cells. The exact mechanism of action of bendamustine remains unknown.

12.2 Pharmacodynamics

Based on the pharmacokinetics/pharmacodynamics analyses of data from adult patients with NHL, nausea increased with increasing bendamustine C_{max}.

Cardiac Electrophysiology

The effect of bendamustine on the QTc interval was evaluated in 53 patients with indolent NHL and mantle cell lymphoma on Day 1 of Cycle 1 after administration of rituximab at 375 mg/m² intravenous infusion followed by a 30-minute intravenous infusion of bendamustine at 90 mg/m²/day. No mean changes greater than 20 milliseconds were detected up to one hour post infusion. The potential for delayed effects on the QT interval after one hour was not evaluated.

12.3 Pharmacokinetics

Following a single dose of 120 mg/m² of bendamustine hydrochloride over 10-minute infusion, the mean C_{max} achieved was 35 µg/mL (range 6 to 49 µg/mL), occurring typically at the end of infusion. Little or no accumulation in plasma is expected for bendamustine administered on Days 1 and 2 of a 28-day cycle.

Distribution

The protein binding of bendamustine ranged from 94-96% and was concentration independent from 1-50 µg/mL. The blood to plasma concentration ratios in human blood ranged from 0.84 to 0.86 over a concentration range of 10 to 100 µg/mL.

The mean steady-state volume of distribution (V_{ss}) of bendamustine was approximately 20-25 L.

Elimination

After a single intravenous dose of 120 mg/m² of bendamustine over 1 hour, the intermediate half-life (t_{1/2}) of the parent compound is approximately 40 minutes. The mean terminal elimination t_{1/2} of two active metabolites, γ-hydroxybendamustine (M3) and N desmethylbendamustine (M4) are approximately 3 hours and 30 minutes, respectively. Bendamustine clearance in humans is approximately 700 mL/min.

Metabolism

Bendamustine is extensively metabolized via hydrolytic, oxidative, and conjugative pathways. Bendamustine is primarily metabolized via hydrolysis to monohydroxy (HP1) and dihydroxybendamustine (HP2) metabolites with low cytotoxic activity in vitro. Two active minor metabolites, M3 and M4, are primarily formed via CYP1A2 in vitro. M3 and M4 concentrations of these metabolites in plasma are 1/10th and 1/100th that of the parent compound, respectively.

Excretion

Following IV infusion of radiolabeled bendamustine hydrochloride in cancer patients, approximately 76% of the dose was recovered. Approximately 50% of the dose was recovered in the urine (3.3% unchanged) and approximately 25% of the dose was recovered in the feces. Less than 1% of the dose was recovered in the urine as M3 and M4, and less than 5% of the dose was recovered in the urine as HP2.

Specific Populations

No clinically meaningful effects on the pharmacokinetics of bendamustine were observed based on age (31 to 84 years), sex, mild to moderate renal impairment (CLCr ≥ 30 mL/min), or hepatic impairment with total bilirubin $1.5 <$ ULN and AST or ALT $< 2.5 \times$ ULN. The effects of severe renal impairment (CLCr < 30 mL/min), or hepatic impairment with total bilirubin 1.5 - $3 \times$ ULN and AST or ALT 2.5 - $10 \times$ ULN or total bilirubin $> 3 \times$ ULN on the pharmacokinetics of bendamustine is unknown.

Race/Ethnicity

Exposures in Japanese subjects (n=6) were 40% higher than that in non-Japanese subjects receiving the same dose. The clinical importance of this difference on the safety and efficacy of bendamustine hydrochloride in Japanese subjects has not been established.

Drug Interaction Studies

In Vitro Studies

Effect of Bendamustine on CYP Substrates

Bendamustine did not inhibit CYP1A2, 2C9/10, 2D6, 2E1, or 3A4/5. Bendamustine did not induce metabolism of CYP1A2, CYP2A6, CYP2B6, CYP2C8, CYP2C9, CYP2C19, CYP2E1, or CYP3A4/5.

Effect of Transporters on Bendamustine Hydrochloride

Bendamustine is a substrate of P-glycoprotein and breast cancer resistance protein (BCRP).

13 NONCLINICAL TOXICOLOGY

13.1 Carcinogenesis, Mutagenesis, Impairment of Fertility

Bendamustine was carcinogenic in mice. After intraperitoneal injections at 37.5 mg/m²/day (the lowest dose tested, approximately 0.3 times the maximum recommended human dose [MRHD]) and 75 mg/m²/day (approximately 0.6 times the MRHD) for 4 days, peritoneal sarcomas in female AB/Jena mice were produced. Oral administration at 187.5 mg/m²/day (the only dose tested, approximately 1.6 times the MRHD) for 4 days induced mammary carcinomas and pulmonary adenomas.

Bendamustine is a mutagen and clastogen. In a bacterial reverse mutation assay (Ames assay), bendamustine was shown to increase revertant frequency in the absence and presence of metabolic activation. Bendamustine was clastogenic in human lymphocytes in vitro, and in rat bone marrow cells in vivo (increase in micronucleated polychromatic erythrocytes) from 37.5 mg/m², (the lowest dose tested, approximately 0.3 times the MRHD).

Bendamustine induced morphologic abnormalities in spermatozoa in mice. Following tail vein injection of bendamustine at 120 mg/m² or a saline control on days 1 and 2 for a total of 3 weeks, the number of spermatozoa with morphologic abnormalities was 16% higher in the bendamustine-treated group as compared to the saline control group.

14 CLINICAL STUDIES

14.1 Chronic Lymphocytic Leukemia (CLL)

The safety and efficacy of bendamustine hydrochloride were evaluated in an open-label, randomized, controlled multicenter trial comparing bendamustine hydrochloride to chlorambucil. The trial was conducted in 301 previously-untreated patients with Binet Stage B or C (Rai Stages I - IV) CLL requiring treatment. Need-to-treat criteria included hematopoietic insufficiency, B-symptoms, rapidly progressive disease or risk of complications from bulky lymphadenopathy. Patients with autoimmune hemolytic anemia or autoimmune thrombocytopenia, Richter's syndrome, or transformation to prolymphocytic leukemia were excluded from the study.

The patient populations in the bendamustine hydrochloride and chlorambucil treatment groups were balanced with regard to the following baseline characteristics: age (median 63 vs. 66 years), gender (63% vs. 61% male), Binet stage (71% vs. 69% Binet B), lymphadenopathy (79% vs. 82%), enlarged spleen (76% vs. 80%), enlarged liver (48% vs. 46%), hypercellular bone marrow (79% vs. 73%), "B" symptoms (51% vs. 53%), lymphocyte count (mean 65.7x10⁹/L vs. 65.1x10⁹/L), and serum lactate dehydrogenase concentration (mean 370.2 vs. 388.4 U/L). Ninety percent of patients in both treatment groups had immuno-phenotypic confirmation of CLL (CD5, CD23 and either CD19 or CD20 or both).

Patients were randomly assigned to receive either bendamustine hydrochloride at 100 mg/m², administered intravenously over a period of 30 minutes on Days 1 and 2 or chlorambucil at 0.8 mg/kg (Broca's normal weight) administered orally on Days 1 and 15 of each 28-day cycle. Efficacy endpoints of objective response rate and

BENDEKA® (bendamustine hydrochloride) injection

progression-free survival were calculated using a pre-specified algorithm based on NCI working group criteria for CLL.

The results of this open-label randomized study demonstrated a higher rate of overall response and a longer progression-free survival for bendamustine hydrochloride compared to chlorambucil (see Table 5). Survival data are not mature.

Table 5: Efficacy Data for CLL

	Bendamustine Hydrochloride (N=153)	Chlorambucil (N=148)	p-value
Response Rate n (%)			
Overall response rate	90 (59)	38 (26)	<0.0001
(95% CI)	(51, 66.6)	(18.6, 32.7)	
Complete response (CR)*	13 (8)	1 (<1)	
Nodular partial response (nPR)**	4 (3)	0	
Partial response (PR)†	73 (48)	37 (25)	
Progression-Free Survival††			
Median, months (95% CI)	18 (11.7, 23.5)	6 (5.6, 8.6)	
Hazard ratio (95% CI)	0.27 (0.17, 0.43)		<0.0001

CI = confidence interval

*CR was defined as peripheral lymphocyte count $\leq 4 \times 10^9/L$, neutrophils $\geq 1.5 \times 10^9/L$, platelets $>100 \times 10^9/L$, hemoglobin $>110g/L$, without transfusions, absence of palpable hepatosplenomegaly, lymph nodes ≤ 1.5 cm, $< 30\%$ lymphocytes without nodularity in at least a normocellular bone marrow and absence of "B" symptoms. The clinical and laboratory criteria were required to be maintained for a period of at least 56 days.

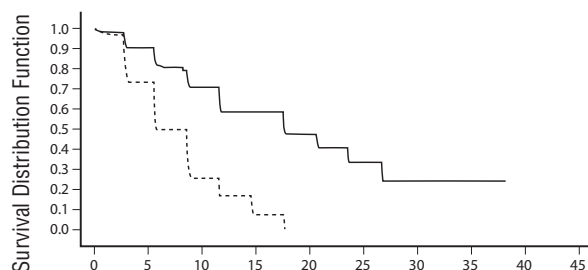
**nPR was defined as described for CR with the exception that the bone marrow biopsy shows persistent nodules.

†PR was defined as $\geq 50\%$ decrease in peripheral lymphocyte count from the pretreatment baseline value, and either $\geq 50\%$ reduction in lymphadenopathy, or $\geq 50\%$ reduction in the size of spleen or liver, as well as one of the following hematologic improvements: neutrophils $\geq 1.5 \times 10^9/L$ or 50% improvement over baseline, platelets $>100 \times 10^9/L$ or 50% improvement over baseline, hemoglobin $>110g/L$ or 50% improvement over baseline without transfusions, for a period of at least 56 days.

††PFS was defined as time from randomization to progression or death from any cause.

Kaplan-Meier estimates of progression-free survival comparing bendamustine hydrochloride with chlorambucil are shown in Figure 1.

Figure 1. Progression-Free Survival



Progression – Free Survival (months)		
Study Treatment	Bendamustine Hydrochloride	Chlorambucil

14.2 Non-Hodgkin Lymphoma (NHL)

The efficacy of bendamustine hydrochloride was evaluated in a single arm study (NCT00139841) of 100 patients with indolent B-cell NHL that had progressed during or within six months of treatment with rituximab or a rituximab-containing regimen. Patients were included if they relapsed within 6 months of either the first dose (monotherapy) or last dose (maintenance regimen or combination therapy) of rituximab. All patients received bendamustine hydrochloride intravenously at a dose of 120 mg/m², on Days 1 and 2 of a 21-day treatment cycle. Patients were treated for up to 8 cycles.

The median age was 60 years, 65% were male, and 95% had a baseline WHO performance status of 0 or 1. Major tumor subtypes were follicular lymphoma (62%), diffuse small lymphocytic lymphoma (21%), and marginal zone lymphoma (16%). Ninety-nine percent of patients had received previous chemotherapy, 91% of patients had received previous alkylator therapy, and 97% of patients had relapsed within 6 months of either the first dose (monotherapy) or last dose (maintenance regimen or combination therapy) of rituximab.

Efficacy was based on the assessments by a blinded independent review committee (IRC) and included overall response rate (complete response + complete response unconfirmed + partial response) and duration of response (DR) as summarized in Table 6.

BENDEKA® (bendamustine hydrochloride) injection

Table 6: Efficacy Data for NHL*

	Bendamustine Hydrochloride (N=100)
Response Rate (%)	
Overall response rate (CR+CRu+PR)	74
(95% CI)	(64.3, 82.3)
Complete response (CR)	13
Complete response unconfirmed (CRu)	4
Partial response (PR)	57
Duration of Response (DR)	
Median, months (95% CI)	9.2 months (7.1, 10.8)

CI = confidence interval

*IRC assessment was based on modified International Working Group response criteria (IWG-RC). Modifications to IWG-RC specified that a persistently positive bone marrow in patients who met all other criteria for CR would be scored as PR. Bone marrow sample lengths were not required to be ≥ 20 mm.

15 REFERENCES

1. OSHA Hazardous Drugs. OSHA. [Accessed on 09/09/2015, from <http://www.osha.gov/SLTC/hazardousdrugs/index.html>]

16 HOW SUPPLIED/STORAGE AND HANDLING

16.1 Safe Handling and Disposal

BENDEKA (bendamustine hydrochloride) injection is a cytotoxic drug. Follow applicable special handling and disposal procedures.¹ Care should be exercised in the handling and preparation of solutions prepared from BENDEKA (bendamustine hydrochloride) injection. The use of gloves and safety glasses is recommended to avoid exposure in case of breakage of the vial or other accidental spillage. If a solution of BENDEKA (bendamustine hydrochloride) injection contacts the skin, wash the skin immediately and thoroughly with soap and water. If BENDEKA (bendamustine hydrochloride) injection contacts the mucous membranes, flush thoroughly with water.

16.2 How Supplied

BENDEKA (bendamustine hydrochloride) injection is supplied in individual cartons of 5 mL clear multiple-dose vials containing 100 mg of bendamustine hydrochloride as a clear, and colorless to yellow ready-to-dilute solution.

• NDC 63459-348-04, 100 mg/4 mL (25 mg/mL)

16.3 Storage

Store BENDEKA (bendamustine hydrochloride) injection in refrigerator, 2°-8°C (36°-46°F). Retain in original carton until time of use to protect from light.

17 PATIENT COUNSELING INFORMATION

Allergic (Hypersensitivity) Reactions

Inform patients of the possibility of serious or mild allergic reactions and to immediately report rash, facial swelling, or difficulty breathing during or soon after infusion [see Warnings and Precautions (5.5)].

Myelosuppression

Inform patients of the likelihood that BENDEKA (bendamustine hydrochloride) injection will cause a decrease in white blood cells, platelets, and red blood cells. They will need frequent monitoring of these parameters. They should be instructed to report shortness of breath, significant fatigue, bleeding, fever, or other signs of infection [see Warnings and Precautions (5.1)].

Hepatotoxicity

Inform patients of the possibility of developing liver function abnormalities and serious hepatic toxicity. Advise patients to immediately contact their healthcare provider if signs of liver failure occur, including jaundice, anorexia, bleeding or bruising [see Warnings and Precautions (5.6)].

Fatigue

Advise patients that BENDEKA (bendamustine hydrochloride) injection may cause tiredness and to avoid driving any vehicle or operating any dangerous tools or machinery if they experience this side effect [see Adverse Reactions (6.1)].

Nausea and Vomiting

Advise patients that BENDEKA (bendamustine hydrochloride) injection may cause nausea and/or vomiting. Patients should report nausea and vomiting so that symptomatic treatment may be provided [see Adverse Reactions (6.1)].

Diarrhea

Advise patients that BENDEKA (bendamustine hydrochloride) injection may cause diarrhea. Patients should report diarrhea to the physician so that symptomatic treatment may be provided [see Adverse Reactions (6.1)].

Rash

Advise patients that a mild rash or itching may occur during treatment with BENDEKA (bendamustine hydrochloride) injection. Advise patients to immediately report severe or worsening rash or itching [see Warnings and Precautions (5.5)].

Embryo-Fetal Toxicity

Advise pregnant women and females of reproductive potential of the potential risk to a fetus. Advise females to inform their healthcare provider of a known or suspected pregnancy [see Warnings and Precautions (5.9), Use in Specific Populations (8.1, 8.3), and Nonclinical Toxicology (13.1)]. Advise female patients of reproductive potential to use effective contraception during treatment with BENDEKA and for 6 months after the final dose [see Use in Specific Populations (8.1, 8.3)]. Advise males

BENDEKA® (bendamustine hydrochloride) injection

with female partners of reproductive potential to use effective contraception during treatment with BENDEKA and for 3 months after the final dose [see *Use in Specific Populations* (8.3), and *Nonclinical Toxicology* (13.1)].

Lactation

Advise females not to breastfeed during treatment with BENDEKA and for at least 1 week after the final dose [see *Use in Specific Populations* (8.2)].

Infertility

Advise males of reproductive potential that BENDEKA may impair fertility [see *Use in Specific Populations* (8.3)].

BEN-009

Distributed By:

Teva Pharmaceuticals USA, Inc.

North Wales, PA 19454

All rights reserved.

BEN-40814

teva